



BUILDING A BETTER I-4

Stay Informed:

- » Project Hotline: 844-ULT-INFO (858-4636)
- » Sign up for email and text alerts at I4Ultimate.com
- » For real-time traffic conditions call 511, download Florida 511 mobile apps or visit FL511.com
- » Follow @i4ultimate on Twitter

GARLAND AVE. CLOSING NORTH OF SR-50

GARLAND AVENUE, FROM COLONIAL DRIVE (STATE ROAD 50) TO MARKS STREET, IS CLOSING FOR 14 MONTHS.

The Florida Department of Transportation is temporarily closing Garland Avenue, between Colonial Drive (S.R. 50) and Marks Street. Closure begins early to mid-March 2016. This long-term closure of approximately 14 months is necessary for construction of drainage and bridge work, a new eastbound Interstate 4 entrance ramp from Colonial Drive, and to realign Garland Avenue.

STARTING: Northbound on Garland Avenue

Traveling north on Garland Avenue, begin detour by turning right on Amelia Street or Colonial Drive (S.R. 50). Turn left onto Magnolia Avenue to proceed to end of detour at Orange Avenue.

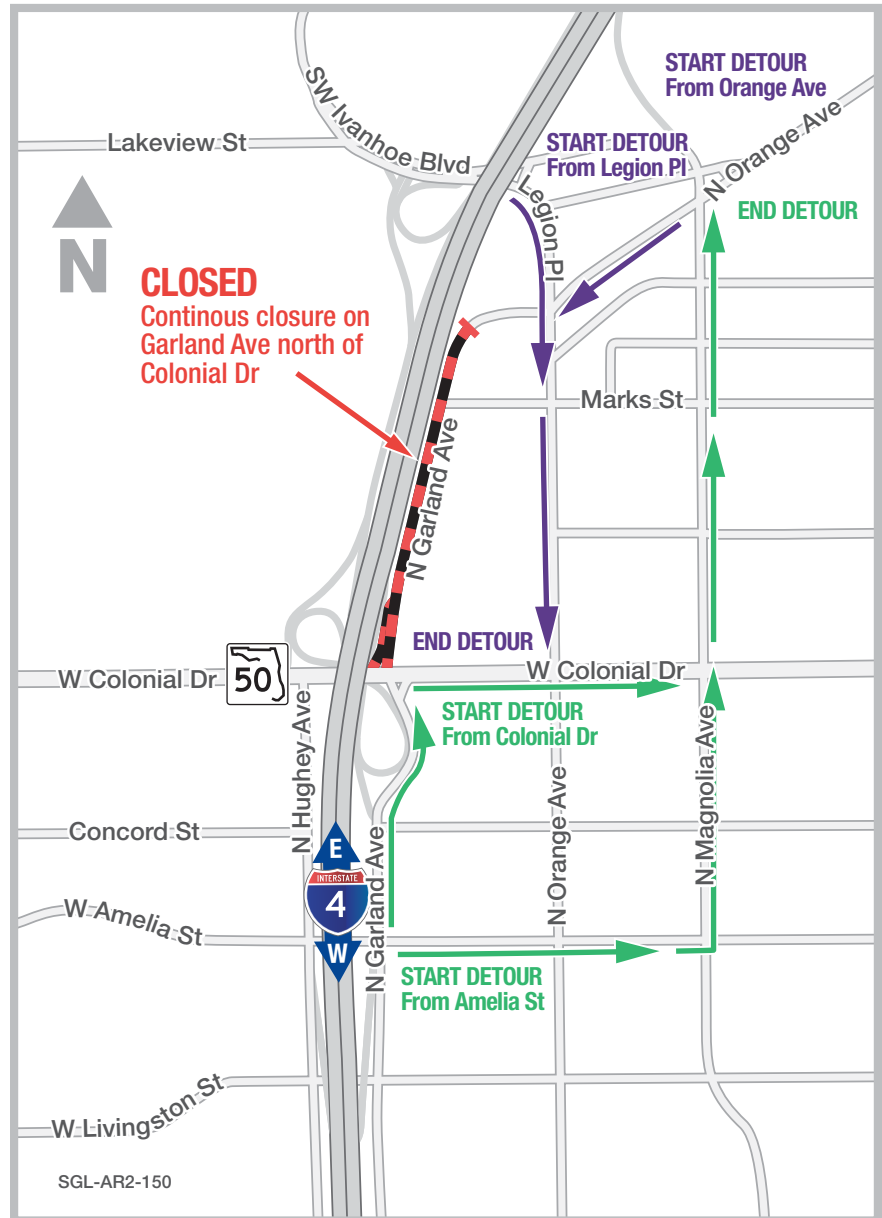
STARTING: Southbound on Legion Place or Orange Avenue

Traveling southbound from Legion Place or Orange Avenue, instead of turning right onto Garland Avenue, begin detour by continuing on Orange Avenue and proceed to end of detour at Colonial Drive (S.R. 50).

PROJECT INFO

The \$2.3 billion I-4 Ultimate project is reconstructing 21 miles of interstate from west of Kirkman Road to east of State Road 434 in Longwood. For more information about I-4 Ultimate, contact David Parks, I-4 Ultimate Public Information Officer, at 844-ULT-INFO (844-858-4636) or DavidParks@i4Ultimate.com.

See more details and download this handout at: i4Ultimate.com/Garland



Closure subject to change. Construction progress, roadway conditions and weather may require schedule adjustments. Please check i4ultimate.com/alertsmap for most up-to-date information.



Sign up for I-4 Construction Updates and Alerts at I4Ultimate.com
Get real-time traffic and incident alerts at FL511.com

